

Middleby Cooking Systems Group



1400 Toastmaster Drive • Elgin, IL 60120-9272 U. S. A. • Telephone: (847)741-3300 • Service and Parts Fax: (847)741-4406



SUBJECT

Defective conveyor drive gear motors produced in December 1999

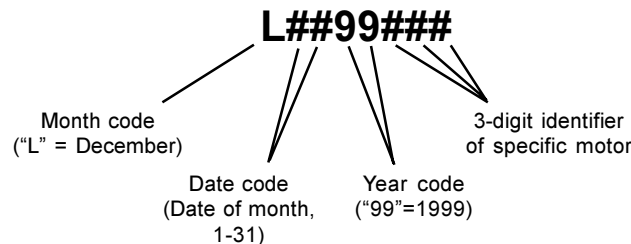
GENERAL

It has come to the attention of the Middleby Service Department that some conveyor gear motors shipped as stock to our Authorized Service Agencies are defective.

The affected gear motors are P/N 27384-0011. This is a 1350:1 motor used on the following ovens:

- PS200/220/224
- PS200 Tandem
- PS200VL/220VL/224VL
- PS570S Split Belt

The defective motors can be identified by their serial numbers. In the serial number box on the data plate, the motors are identified as follows:



APPLICATION

Please check your existing stock of P/N 27384-0011. If any motors that you have in stock match the month and year code shown (December 1999, or "L##99"), fill out a CFESA tag and form with a description of "**New-Defective as per Service Bulletin MM-173.**" Return the gear motor to Middleby for a full credit.

If, after returning any defective motors, your stock of P/N 27384-0011 is low, be sure to reorder the part from the Middleby Parts Department.

COMPATIBILITY - n/a

FEATURES - n/a

AVAILABILITY

All P/N 27384-0011 motors in Middleby stock are NOT defective, and can be ordered normally.

DISPOSITION OF INVENTORY

Refer to the *Application* section of this Bulletin.